

FREQUENTLY ASKED QUESTIONS

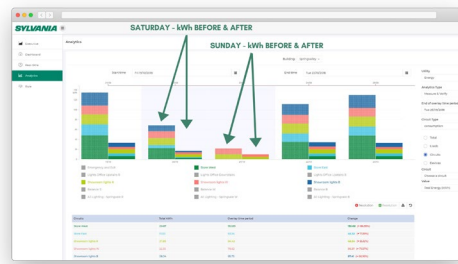
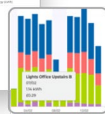
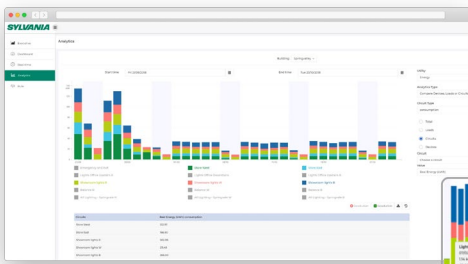
Version: V1.2 Release date: January 2022



What is SylSmart Energy?

SylSmart Energy is Sylvania's **cloud-based energy visualisation tool** that gives you valuable, in depth insights into the energy performance of your site, allowing you to verify, decrease and optimise your energy consumption as well as monitor and reduce CO2 emissions and transition to clean energy.

SylSmart Energy provides a an easy to navigate energy monitoring platform that brings energy data to life. It converts real time data into powerful analytics helping users to make sense of their energy and highlight potential areas that could be improved. When applied to lighting installations, **SylSmart Energy** captures the real time energy consumption of your existing and new lighting solution, allowing you to verify the savings achieved against the target ROI.



Why do I need to measure the energy consumption of my business?

We are currently experiencing continuous growth in electricity prices, due to the instability of the energy markets. Therefore, it is important to have a **precise and detailed view of the energy consumption** of a business, in order to make proposals for improvement and optimisation, such as:

- compare different energy efficiency solutions (before and after)
- adjust the energy usage based on the hourly variability of electricity prices
- improve balance between energy generation and consumption
- compare cost reductions with a previous baseline
- analyse the peak kVA reduction to adequate the energy demand



What kind of data can I get with SylSmart Energy?

The online platform of **SylSmart Energy** visualises the change in energy parameters including cost (based on time of use), kWh, kW, kVA, Power Factor, Max/Min Current, Max/Min Voltage and CO₂-e.

This data is divided into different zones, depending on the distribution of the electrical circuits. Each zone can be separately monitored, allowing a more precise analysis of your site.

With SylSmart Energy you can measure the energy consumptions, not only for your lighting installations, but also for **any load that consumes electricity**, or even the **energy generated** locally in your installation (such as Solar PV or wind energy).



How complex is the installation process?

The installation of the M&V tool is very simple, and it doesn't require any major installation works: **all the hardware is installed** in the distribution boards. Advanced energy analytics are captured by a 6-channel energy auditor connected to, 60A-600A CT clamps. For more industrial applications a separate kit is available including an industrial grade auditor and a Rogowski coil capable of measuring loads of up to 3000A. Packaged in with the hardware is a subscription that enables you to oversee results remotely through the web-platform for a period time chosen by you.

The CT clamps are attached to cables carrying loads that the customer wishes to measure for example the lighting circuit.

The Energy Auditor is installed on the customers circuit board and collects data read from the CT clamps. The module then relays this data to the cloud via 4G / Wifi.



Is it possible to manage multiple sites?

Yes. SylSmart Energy has a dedicated dashboard which displays the energy consumption across **all of your sites**, allowing you to create and implement global strategies to reduce energy use.

This solution is ideal for businesses that need to centralise the energy monitoring, reducing the number of resources needed to extract the energy information for every installation.