



## Warehouses lit smarter

Eutraco, Belgium

**Eutraco, a European powerhouse in the logistics industry has undertaken the upgrade of their existing lighting to SylSmart enabled luminaires at 3 of their key sites in Belgium.**

### PEACE-OF-MIND PROJECT MANAGEMENT SERVICE

This turnkey project was carried out in collaboration between Sylvania and Equans (Engie Solutions) and utilised SylSmart Standalone enabled Granit Highbay and Resisto waterproof luminaires combined with Kalani floodlight LED fixtures. Providing not only high-quality light but versatile wireless control.

*"The luminaires and sensors were very easy to install and took very little time to set up compared to normal wired systems."*  
- Yannick Van Puyenbroeck, Equans.

### MAXIMUM CONTROL, MINIMUM INSTALLATION PERFORMANCE OF SYLSMART STANDALONE

Eutraco has a multitude of warehousing sites throughout Europe providing their customers with fast efficient and optimised logistics services. Within their facilities it is important to have excellent visibility but only when employees are present.

With this in mind Eutraco required a lighting solution that was in keeping with their own philosophy of being fast, efficient and optimised and selected SylSmart Standalone



### Client

Eutraco, Belgium



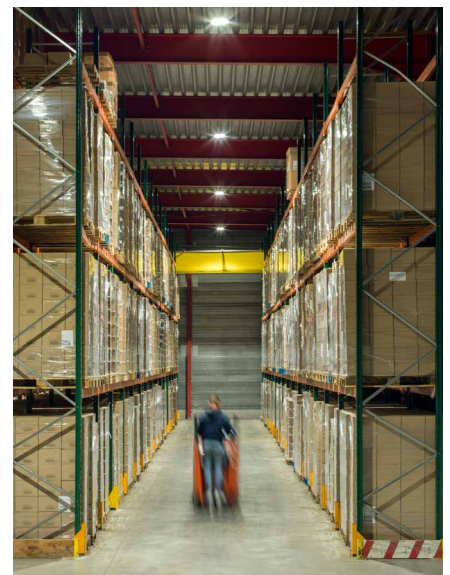
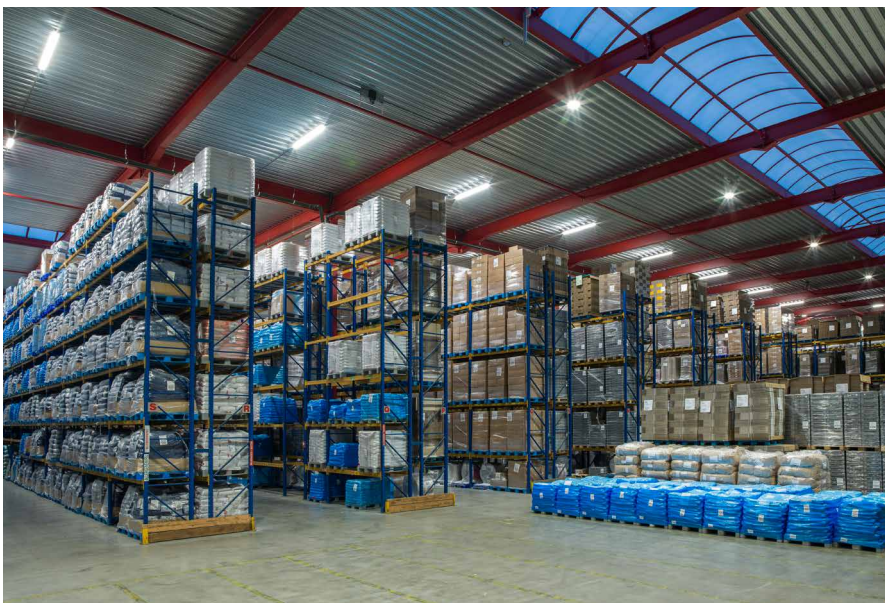
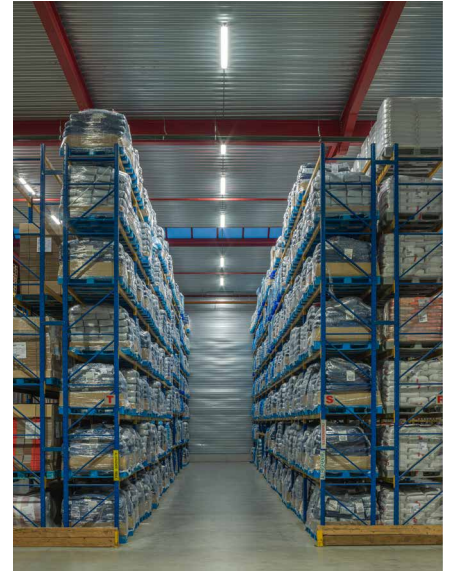
### Key Benefits

- Minimum disruption, no additional wiring and 100% programmed via app
- Impressive energy savings of 84%, gained from controlled light levels, occupancy sensors, and daylight harvesting
- Flexible and robust control – tailored light to the user's needs and luminaires communicate over wireless mesh meaning no single point of failure
- Exceptional motion detection coverage thanks to market-leading ultra-wide PIR Sensors



## Solutions and products used

SylSmart Standalone  
 Granit Highbay  
 Resisto waterproof  
 Kalani Floodlight



as it would provide them with maximum control and minimum installation.

In addition to this as with any logistics and industry company, a reduction in OPEX was also greatly desired, a goal which SylSmart Standalone helped them to achieve by providing a reduction in energy consumption of 84% through the use of advanced wireless controls.

SylSmart Standalone not only aided Eutraco in their energy reduction targets, but our installation partner also benefited from choosing to utilise the solution:

*“We were looking for a solution that on the one hand is providing highest energy savings, through intelligent luminaires controlled by sensors; on the other hand is easy to implement, in order to keep the installation time of a building in use to a minimum.*

*“Thanks to the SylSmart solution, we could offer the customer more than a standard 1-to-1 relighting but with the same simplicity! SylSmart Standalone makes it possible to link wireless motion and daylight sensors to wireless luminaires and to use them to apply groups and scenes.”*

*This ensures a very efficient use of light and reducing the energy consumption dramatically of the building to the maximum of only light where the customer needs it!*

*Sylvania has supported both us and the client to the maximum throughout the entire duration of the project to answer both our questions and those of the customer.*

*Equans (Fabricom nv) and Eutraco look back to the project work with Sylvania with great satisfaction!” - ARNE VANDERMEULEN, A. PROJECT MANAGER (re)lighting Equans (Fabricom nv // Engie Solutions)*